

merten

INTELLIGENT SOLUTIONS FOR HOLIDAY HOMES

MORE SECURITY AND COMFORT FOR YOUR PROPERTY



Photo: www.northeast.engelvoelkers.com



INTELLIGENT MERTEN SOLUTIONS RELAX – YOU’RE ON HOLIDAY!



Owning a holiday home makes your holiday that bit more pleasant - but it also means having an extra responsibility. And this responsibility is greatest at the moment you return home. Will uninvited guests pay a visit while you are not there? Will your holiday home suffer from storm damage? Will the heating, air conditioning, blinds and heating work as they should the next time you are there?

Merten provides the solutions you need to sleep more easily once back at home. Not to mention making your life even more comfortable while you are on holiday. After all, Merten has been one of the leading manufacturers of innovative systems technology and design-oriented control interfaces for many years. Hallmarks of Merten include: products which have been awarded numerous design prizes and which feature high quality materials such as glass or stainless steel, and are simple to operate. Intelligent solutions that you, as owner of a holiday home, can benefit from.

You can see this for yourself on the next few pages.



MERTEN@HOME THE REMOTE CONTROL FOR YOUR HOLIDAY HOME



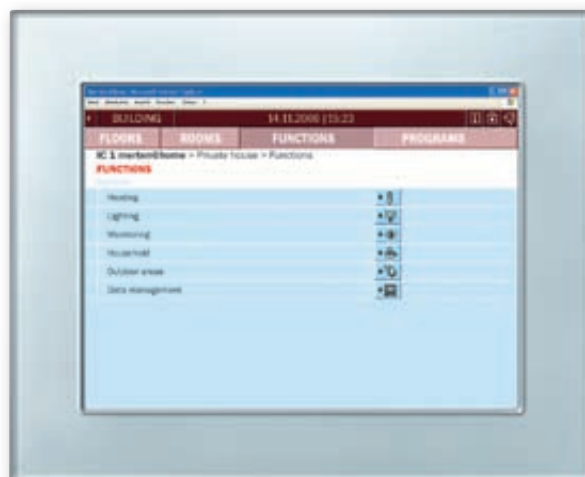
For real peace of mind, you want to be kept informed that everything at your holiday home is as it should be. For example, did you really switch off all the electrical appliances before leaving for home? Has anyone tried to break in while you've been away? Are the pumps and filter units for the pool still in working order?

Merten@home can answer these questions. That's because merten@home provides you with an innovative user interface which puts the world of intelligent building system technology at your fingertips - KNX, which makes it possible for you to access all the functions of your holiday home. At home or abroad.

Whether you want to control the heating, the lighting, the blinds, the monitoring systems or household appliances, merten@home is the perfect remote control for your holiday home.



merten@home via PDA



merten@home via IP Touch Panel 10"

MERTEN@HOME

ONE CLICK AWAY FROM A COMPLETE OVERVIEW

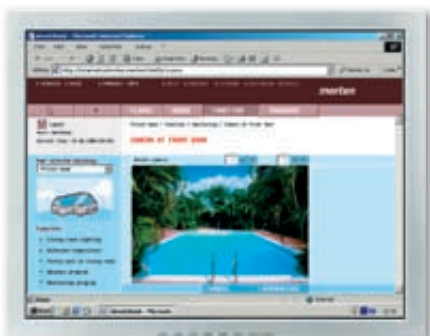


Do you want to be kept up to speed, whether at home or in the office? And also to be sure that everything is fine at your holiday home? Merten@home is all you need. Its innovative user interface allows you to access all building functions at your holiday home. No matter where you are. You could be in

your holiday home itself, operating these functions by touch-screen. But you could just as easily be on the road, using your Personal Digital Assistant (PDA). Or on the Internet, from any PC you choose. A few clicks is all it takes to see that everything is as it should be.

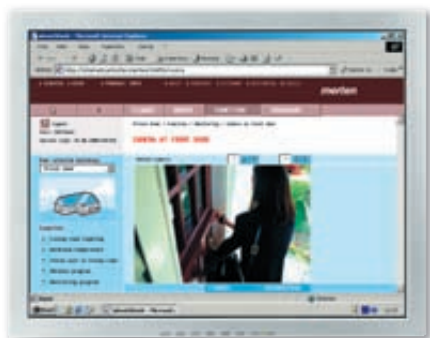


Example 1: Check how your pool is doing.



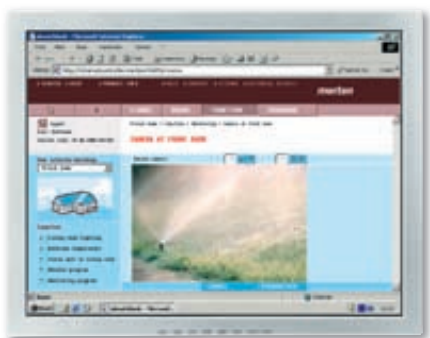
Is your pool being properly maintained by your caretaker while you are not there? Are the pumps and filters working properly? Merten@home gives you the answers with just a few clicks.

Example 2: Know who is on the premises.



Thanks to merten@home you are always in control of who enters your holiday home while you are not there - even when you are back at home.

Example 3: Make sure that the irrigation system in the garden is working.



Are the grounds of your holiday home being maintained in your absence? And is the irrigation system in the garden still working? Merten@home means you can put your mind at rest.

More security thanks to merten@home

If you have installed window contacts or movement or smoke detectors in your holiday home, merten@home ensures that if one of these systems is activated, you are informed automatically and directly. For example, if a window has been broken. This notification is sent to you by text message, e-mail, or as a message to your PDA.

To ward off potential burglars, you can also use merten@home to simulate your presence, from the comfort of your normal

residence. It can be used to automatically switch on the lighting in your holiday home at the same time of day as if you were actually there.

And if, at the airport, you want to check that you really did close all the doors and windows before leaving, simply connect to merten@home via W-LAN and reassure yourself with just a few clicks.



RADIO SYSTEM CONVENIENCE WITHOUT CABLES

In holiday homes, where the electrical installations may be several decades old, the problem is common: you just can't find a switch where you need one. Instead of prising open walls and laying metres of new cable, you can also get convenience without cables: with the Merten radio system. This means you can mount battery-powered radio push-buttons exactly where you need them. Inside, or outside. For switching and dimming lights, or controlling roller shutters.

An example: The only light switch in the bedroom of your holiday home is, of course, beside the door. And you don't want to have to get out of bed just to switch the ceiling light on or off. The solution: Simply swap the switch beside the door for a switch with radio receiver and screw in (or stick) a radio push-button right next to your bed.

Thanks to the radio-controlled Merten plug adapter, even standard lamps and household appliances can be connected to the radio system. Even greater levels of safety and energy efficiency can be achieved with the „Central OFF“ function. This makes it possible to switch off every single load connected to the radio system with one press of a button - for example, when you are leaving.

All Merten radio system components transmit on the secure radio frequency 868 MHz. This means there can be no interference from other control, identification and positioning systems and audio devices transmitting in parallel.



Roller shutter push-button,
design M-PLAN



Radio control center
CONNECT



Radio push-button, 1-gang,
design M-PLAN

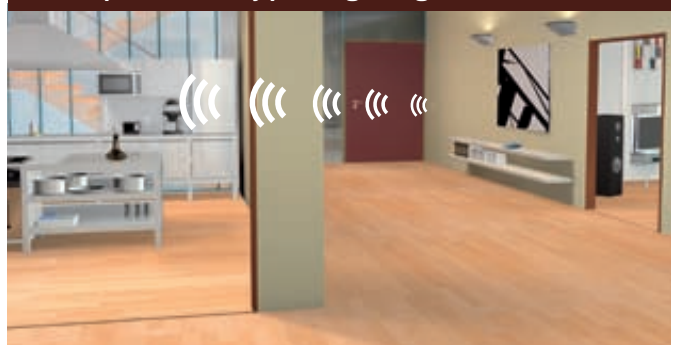


Plug adapter
with radio receiver

More comfort: Switch off the ceiling light without leaving the comfort of your bed - thanks to the radio push-button installed beside it.



More security: use radio to switch off all the loads connected to the radio system - such as the coffee percolator - from a central position and by pressing a single button.





ARGUS MOVEMENT DETECTORS BRIGHTER, FASTER

Sufficient exterior lighting even in areas far from a light switch, and which will put uninvited guests into the spotlight whether they like it or not: this is the beauty of the ARGUS movement detector.

An example: If you return home laden down after a hard day's shopping, you don't need to worry about getting a hand free to switch on the light. It will switch itself on automatically.

The integrated brightness sensor ensures that the light switches on automatically at dawn and dusk, if you so require. And if you are planning a garden party, you can of course set the ARGUS movement detector to "maintained light" using the radio push-button.



ARGUS movement detector

ARGUS SMOKE DETECTORS SLEEP SOUNDLY

There should be one in every room of your holiday home, but particularly in the bedrooms, in the children's room and in the connecting escape routes - ARGUS smoke detectors. If a fire does break out, the ARGUS smoke detector will trigger an alarm as soon as it detects even a minuscule amount of smoke particles in the air. This means you have plenty of time to get out of the building before it's too late.

Domestic smoke detectors are also easy to install, even if the voltages and connections in your holiday home are different from those back home. Since it is mains-independent, this is not a problem.

Its flat design and attractive range of colours mean that an ARGUS smoke detector is not out of place in any holiday home. An even higher level of security is attained by networking the smoke detectors via radio. No matter where the smoke is first detected, the alarm will be sounded via all the smoke detectors which you have connected via radio in your holiday home. And by integrating them into the Merten radio system, they can also turn on the lights and raise the roller shutters to make it easier for you to get out.

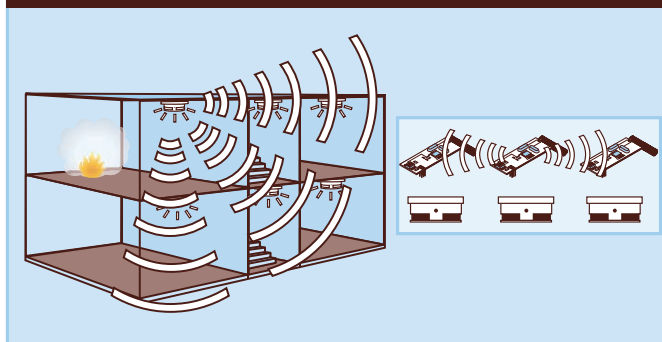


ARGUS smoke detector

Comfortable: Integrated rear view monitoring switches the porch light on before you have even left the building.



Invincible safety from top to bottom wireless networking of smoke detectors on secure radio frequency 868 MHz.



MERTEN SOLUTIONS AT A GLANCE

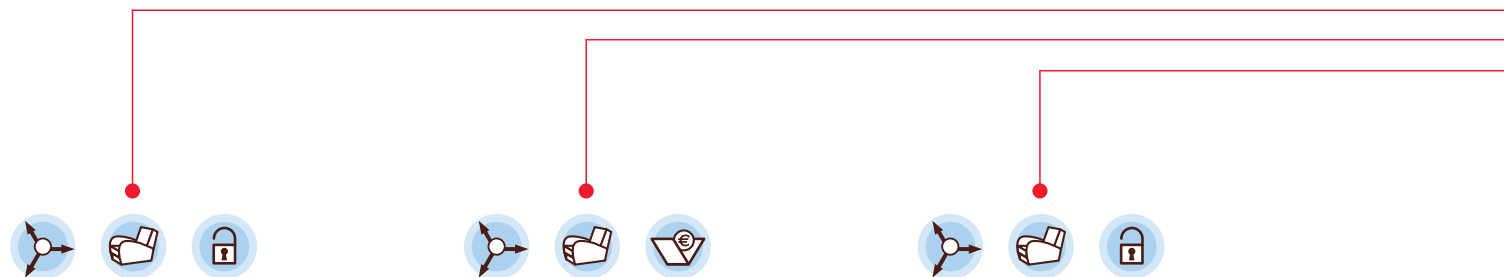
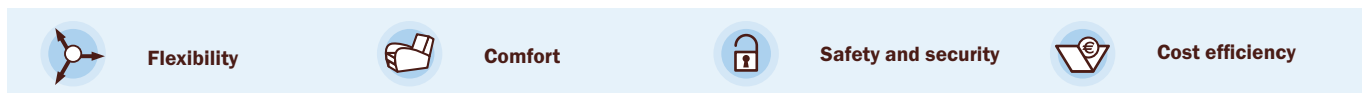
LIVING THE GOOD LIFE

A house in the sun, or a hideaway in the mountains - no matter where you have set up your holiday home, Merten provides intelligent solutions to make your break there more comfortable, safe, economic and flexible. In terms of comfort, take the following example: It's evening, and you want to make your home cosy. Now you can do this without trailing through every room from one switch and thermostat to the other.

Instead, simply press a single button to activate all the desired functions in one go: blinds come down, atmospheric lighting is switched on and the room is heated to just the right temperature. Settings such as these (known as scenes) can be created exactly as you want them - and you can do so via remote control, PDA, television, touchscreen or PC.



PLANTEC with room temperature control unit



Intelligent blind control

- Central and convenient control of the electrically operated roller shutters and blinds in your holiday home, at the touch of a button.
- Protection from the sun is ensured by motor-powered blinds which are lowered automatically when sun sensors detect strong direct sunlight.
- Wind sensors ensure that motor-powered awnings are retracted automatically when a storm is brewing.
- Protection against burglary is ensured by time-controlled shutters and blinds that also protect windows when you are out or when you return to your main residence.



Merten wind sensor

Timed heating control:

- Pleasant room temperatures ensured by individual temperature control of individual rooms - for example, on cold summer evenings and nights.
- Heating costs reduced thanks to time control of the heating valves - including when you're not there.
- A healthy sleeping environment while on holiday thanks to the automatic night economy function for the heating.
- Room temperature is automatically lowered when the windows are opened, leading to further reductions in heating costs.



Multi-function push-button with room temperature control unit, 2-gang, System M

Flexible access to building functions

- Building functions can be adapted flexibly if the rooms are to be used differently, for example if you rent out your holiday home.
- World-wide access to the entire building technology system via PDA, PC or touchscreen, allowing you to switch the heating from night operation to daytime operation before you arrive at your holiday residence, for example.



merten@home via PDA



Comprehensive messages

- Warnings about open windows and house or patio doors are shown on an information display in the entrance hall of your holiday home.
- Fault signals forwarded by telephone, for example to a local security firm, to your caretaker or to neighbours.
- Burglars deterred by movement detectors that switch on the lighting in and around your holiday home.



Individual lighting control:

- For example, if you are off on a day trip or to stock up at the “supermercado”, you need only press the “Central OFF” switch at the front door to make sure that every load - lighting, devices connected to sockets - is deactivated.
- In the living room, dining room, or on the terrace, whether reading, watching television, or simply enjoying a glass of wine: lighting just as you like it, whenever and wherever you want it. Easy to save and to activate. By IR remote control, for example, or via PDA.
- If you hear things going bump in the night, just hit the “panic button” next to your bed to illuminate your holiday home and garden with bright light.
- Presence simulation tricks burglars into thinking you are there when, in fact, you are somewhere else completely.



Info display,
System M



Push-button,
2-gang, System M



Multi-function push-
button with room
temperature control
unit, 2-gang,
System Design

MERTEN SWITCH DESIGNS

DRESS UP YOUR WALLS

SYSTEM M

M-SMART



Active white



Polar white



White



Polar white/Anthracite



Polar white/Aluminium

M-ARC



Polar white



Aluminium



Anthracite



Sand/Polar white



Midnight blue/Aluminium

M-PLAN / M-PLAN II



Polar white



Aluminium



Anthracite



Aluminium/Anthracite



Polar white/Aluminium

M-PLAN real glass



Diamond/Polar white



Diamond/Aluminium



Mahogany/Polar white



Sapphire/Anthracite



Ruby/Aluminium

M-STAR



Chrome/Polar white



Chrome/Anthracite



Satin silver/Anthracite



Polished brass/Polar white



Polished brass/White

Other attractive colour combinations are possible.



SYSTEM DESIGN

ARTEC



Polar white



Light grey



Aluminium



Stainless steel



Black grey

ANTIK



Polar white



White



Dark brazil



Antique brass



Polished brass/Polar white

TRACENT



Satinated



Transparent



TRACENT aluminium frame/
ARTEC aluminium rocker

FLUSH-MOUNTED SPECIAL RANGE

AQUADESIGN



Polar white



White



Aluminium



Anthracite



Dark brazil

No matter what atmosphere characterises your holiday home, there is a Merten switch range to match. Some classic, some modern, some exclusive. The enormous choice offered by our switch ranges, with up to 210 different functions available, means that your electrical installations also form a visually coherent whole, with user interfaces matching socket-outlets and aerial socket-outlets, for example. And if you want to

change the design of your switches – because the building has been redecorated, for example – there's no problem matching the new frames and rockers with the existing flush-mounted inserts.

Special requests? No problem. We would be happy to customise our products to your individual needs. One call is all it takes.

SOLUTIONS FOR INTELLIGENT BUILDINGS

merten

Merten GmbH & Co. KG

P.O. Box 100653

D-51606 Gummersbach, Germany

Phone +49 2261 702-203

Fax +49 2261 702-328

export@merten.de

www.merten.com

493621/12.06/2.DR

Subject to technical modifications.